

# IMO MARINE

— FLOORING (UK) —

*Turnkey Supplier & Installer For The Marine & Offshore and Industries*



# Marine & Offshore Flooring



## INDEX

Introduction

Marine

Offshore

Product Supply

Services & Technical Support

Contact Details





## INTRODUCTION

**IMO Marine Flooring UK**, is an Aberdeen based specialist flooring contractor involved in the Marine and Offshore sectors. With over 35 years experience in the supply and installation of flooring and the knowledge base within **IMO Marine Flooring UK** has earned us the reputation as one of the leaders in our field.

The materials we provide as part of our service are fully compliant with the latest regulatory requirements and meet IMO Res A 653 (16) (IMO Res MSC.61) (67). We have several well established relationships with product manufacturers over the years and can offer some innovative marine flooring solutions to overcome any offshore flooring or marine flooring issues.





## MARINE

**IMO Marine Flooring UK** have extensive experience with the installation of marine flooring on a wide range of floating installations varying from a standard accommodation barge to a rocket launching platform - from Aberdeen to Azerbaijan / Belfast to Brazil. We have specialist marine flooring products in our range designed to meet the rigours of marine life and in compliance with the latest regulatory requirements (IMO).

**IMO Marine Flooring UK** can provide experienced flooring personnel; anywhere in the world to undertake your marine flooring project, survey or assessment and quotation !



## OFFSHORE

**IMO Marine Flooring UK** have a track record stretching back over 35 years in the supply and installation of flooring systems. As a result we can provide an extensive range of materials and systems designed to comply with the latest regulatory requirements for offshore installations (IMO resolution)

During this time we have been involved in laying millions of square meters of flooring materials for various Offshore companies worldwide. Our customer list includes; Shell, BP, Total, Statoil, Maersk, Valaris, Diamond, Noble, ConocoPhillips, EnQuest, INPEX, Talisman etc.

**IMO Marine Flooring UK** can provide a fully integrated flooring service; on any installation; anywhere in the world.



## PRODUCT SUPPLY

Marine Deck Screeds  
Fire rated Deck Screeds  
Pump-able Deck Screed  
Lightweight Deck Screeds  
Decorative Epoxy Screeds  
Ceramic Quarry Tiles  
External Deck Tiles  
Raised Access Flooring  
Safety Flooring  
Anti-Slip Applications  
Vinyl Floor Tiles  
Carpet Tiles  
Fitted Carpet  
Contract Sheet Vinyl  
Rubber Flooring  
Stairwell Solutions / Stair Treads  
Floors with Logo Designs  
A60 Deck Systems  
Underfloor Heating  
Black Out Blinds & Curtains  
NORSOK / IMO Mattresses



The range of products **IMO Marine Flooring UK** currently has available are fully compliant with the latest regulatory requirements for offshore installations and marine vessels. The flooring products can be used on any installation worldwide and are approved by a 3rd party verification body such as Lloyds, DNV, BV, USCG, ABS, etc.

**IMO Marine Flooring UK** will assist to undertake any project - no matter how large or small – from small refurbishments to assisting full living quarters on your marine vessel or offshore installation. We also have extensive experience in providing specialist flooring services to pre-fabricated accommodation module manufacturers. The product range we have shown on our website represents the main component parts of our work, however it is a small part of the extensive range which can be provided to suit your schedule and budget.

**Contact us today for a quotation.**

## Marine Deck Screeds – Pumpable, Fast Drying & Lightweight



### 4660N Marine Elastic

For marine and offshore installations, inside of living quarters, wet areas and other light traffic areas - mainly foot traffic.

- Pumpable
- High elasticity
- Smooth surface
- Rapid drying and fast setting
- High surface strength



### 4675N Marine Flow Rapid

For marine and offshore installations, inside of living quarters, wet areas and other high traffic areas. Smooth surface

- Rapid drying and fast setting
- High surface strength
- Subfloor for resin coatings
- For light industry



### 4685N Marine Ultra Light (EN)

For marine and offshore installations, inside of living quarters, wet areas and other light traffic areas - mainly foot traffic.

- Low weight
- Smooth surface
- Rapid drying and fast setting





## Decorative Screeds & Coatings

**Flowcrete**  
for the world at your feet

**Flowcrete** manufactures a wide-range of seamless flooring products, which fulfill the needs of both the commercial and industrial sectors. In the industrial marketplace, these include ultra-fast curing systems, the hardest-wearing resins for industry, through to high technology antistatic systems.



**Fildek** marine systems have been developed over many years and are supported by successful installations in vessels and offshore platforms. The current range of products is based upon solvent free technology with emphasis being put on user friendly, high performance, cost effective products.





## Floor Coverings – Vinyl & Rubber

POLYFLOR<sup>™</sup>  
COVERING THE WORLD

Gerflor<sup>®</sup>  
theflooringgroup

**Voyager Maritime** is a collection of heavy duty vinyl and rubber floor coverings designed for the commercial shipping sector and includes Voyager Maritime Tiles & Planks, Polysafe Stud Tile and Voyager PUR Sheet.



**STREAMO**  
MARINE FLOORINGS FOR SHIP INTERIORS

**Streamo Range** -The first IMO compliance flooring ever which combines stylish designs, safety and high traffic resistance. Astonishing replication of natural wood, stone and textile patterns. 0.55 mm wear layer to offer the highest durability and strongest resistance to heavy traffic.



**Streamo Clipper** is a rubber studded tile, complying with IMO regulations Adapted for all marine installations where rubber is requested (technical areas, military vessels, workboats, etc.)



## Safety Flooring

**IMO Marine Flooring** have products which provide an enhanced level of reassurance where personnel safety might be an concern :

**Voyager MarineSafe PU** is ideal for use in areas on marine vessels which are normally dry but where occasional water spillage can occur, making slip resistance an important consideration. Typical areas include stairway enclosures, control stations, staff quarters, en-suites, back of house corridors, circulation areas, general service spaces, washrooms, WCs, bar serveries, food preparation areas, kitchens and canteens. Voyager MarineSafe should not have a polish applied as it will impair the slip resistance of the floor.



We also have a range of top screeds and coatings which can be applied over existing surfaces to achieve an anti-slip surface. We have surface treatment products for refurbishing existing quarry tiles to provide a lasting non-slip surface.

**Ask us about our safety flooring products for Marine or Offshore applications**



## Floor Coverings - Carpet

**Forbo IMO Tested & Approved Marine Flooring** For cruise, passenger ferries, river boats and offshore facilities, one of the most difficult areas in which to maintain a high standard of appearance is the flooring. The flooring material sets the tone for the overall look and feel of a vessel with many criteria influencing the specification including aesthetics, durability, maintenance and the requirement of IMO/MED certification.



**Britons** has an excellent track record with the world's largest ship owners, shipyards, and marine designers for use in public areas, cabins, and corridors. Meets stringent flammability and fire code standards, is IMO wheel mark certified, and upholds US Coastguard requirements.



Holding 18 Cradle to Cradle certifications, which cover a total of 110 individual products, **Ege Carpets** is now the no. 1 brand globally in terms of growth rate of an overall certified assortment. The carpet manufacturer is delighted to have gained the highest ever number of certifications achieved in under five years.





## Ceramic Tiles

**Pilkington's** name is synonymous with manufacturing high-quality ceramic floor quarry tiles offering a comprehensive portfolio of suited products.



**Winkelmans** have been an established manufacturer of quarry tiles for over 100 years and are renowned across the globe for our quality products, efficient operation and customer satisfaction.





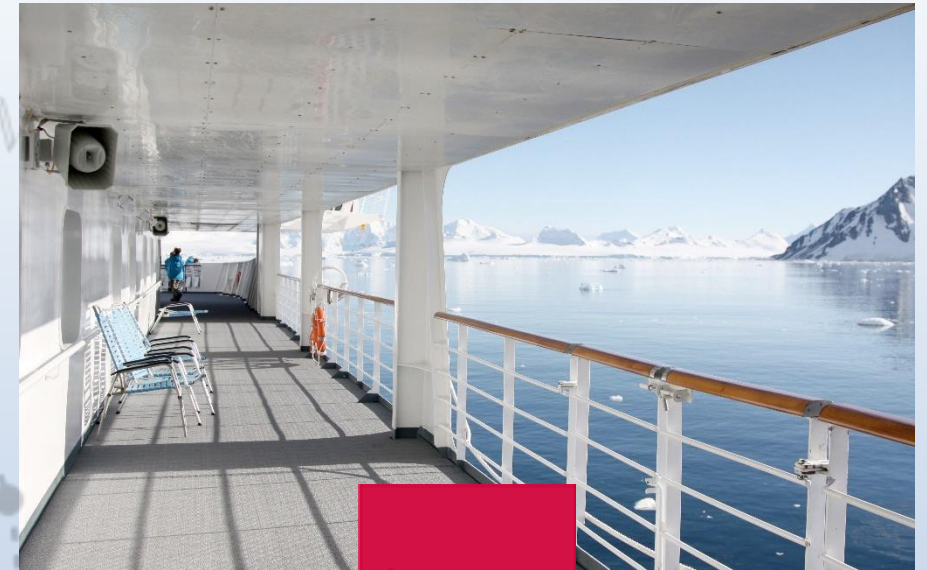
# Marine Deck Tiles

## External Marine Deck Tiles

**Bergo Excellence** - the ideal boat deck covering! Flooring is an entire science. When evaluating a deck covering for a vessel, one has to consider factors such as: Installation, appearance, maintenance, cleaning, sound absorbency, durability and removal.

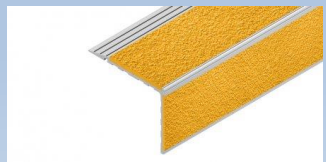
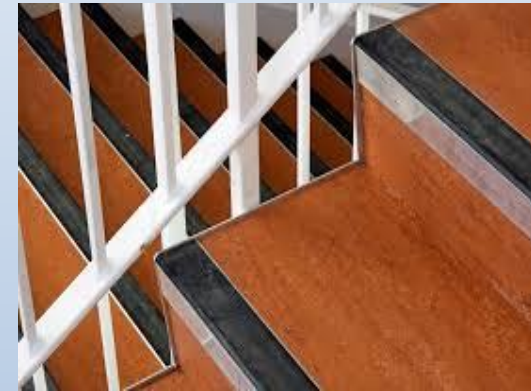
**BERGO** offers a high performance level considering all the above factors and fitting the floor yourself could not be easier, another big advantage. Bergo Excellence is a deck covering which fulfils the requirements for floorings that are exposed to harsh weather, strong sunlight, rain, cold and ice. By laying Bergo Excellence, you protect the painted deck and prolong the intervals between expensive repainting significantly.

**BERGO EXTREME**, conform to relevant MED and IMO, is heavy duty safety flooring ideal for indoor, outdoors and wet areas. It offers slip resistance in areas such as passenger balconies, pool areas, laundry rooms, engine rooms, freezer rooms, etc.



## Stairwell Solutions

**Nora® flooring** is made from high- quality industrial and natural rubber, mineral fillers from natural resources, and eco-compatible colour pigments. By virtue of their extremely dense, closed surface, nora® rubber flooring is effectively dirt-repellent. This is achieved by using "nora® cleanguard", a special production process which ensures optimum material cross- linking. The advantages include reduced susceptibility to soiling, improved hygiene properties and lower outlay for care and cleaning.



**Gradus** has developed stair tread technology to ensure maximum grip and safety on stair flights in all commercial applications. The company manufactures the Gradus XT range which meets BRE recommendations and Building Regulations approved document M (ADM). Gradus offer 16 profile designs to suit all staircases. Inserts are used in the tread to create friction between the shoe and edge of the step to ensure grip and stability. **LED systems** are also available.



## A60 Deck Systems

**BILLYTEX A60-L** is a lightweight (min 25mm) self leveling type deck composition product for A-60 decks, which is composed of Perlite, Cement, Hardener & Synthetic Polymer. It can be applied on all types of marine decks. It also satisfies IMO FTP code MSC.61(67) Annex 1, part 3 and Annex 2, (IMO Res 754(18) / A799(19). **Ideal for projects that have stringent weight control.**



**DURASTIC SOLASDEK LIGHTWEIGHT A60 DECKING** is an "A" class fire resisting horizontal division of A60 standard for cabins, alleyways, public rooms, control areas etc. Approved floor coverings such as Carpet, Linoleum, Vinyl, Rubber & Epoxy Systems can be the finish. It also provides a suitable base for Ceramic and Mosaic Tiles & Epoxy Systems in wet spaces such as galleys, toilets, wash places etc. Ideal for LQs with weight restrictions.



**Weber Marine dB A-60** Floor is designed for ships and offshore installations requiring fire-insulated constructions and sound-insulation. Weber supplies functional and durable floors specified for ships requiring fire insulating constructions with non-combustible materials and sound insulating constructions.

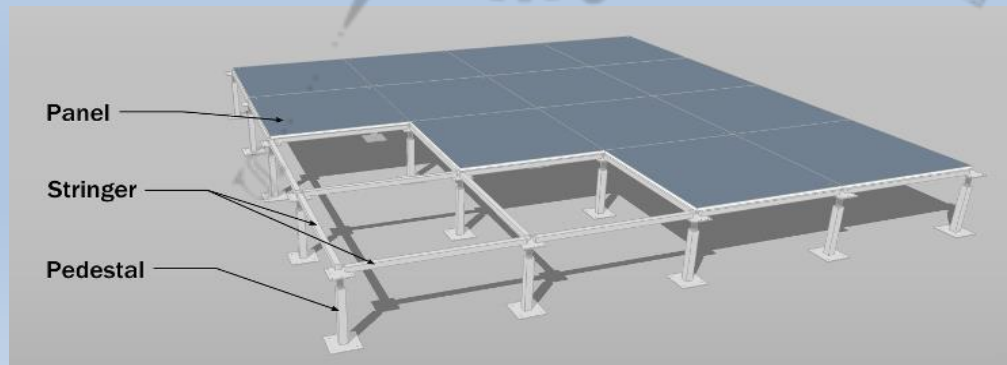


# Raised Access Floors

## FLEXIBLE RAISED ACCESS FLOOR SYSTEM

**Bergvic** Iso Floor system is designed to create a flexible environment for electronic equipment. The floor can be adapted with integrated transformer stands and reinforced transformer passages in all areas where heavy loads occur (up to 14 tones). Floor panels are manufactured in various sizes for the best possible fit.

- For floor heights between 300-2100 mm
- All heavy equipment, including transformers up to 9 tones
- Can be placed directly on the stable and self-supporting substructure. No expensive reinforcements are needed.
- For full access to the plenum in service aisles, there are different panel sizes, from 315-915x600 mm.
- The flexible system enables adaptations for future expansion and changes.
- With up to 1200x1200 mm between the pedestals there is plenty of space for your installations.





## Norsok Approved Products

**IMO Marine Flooring UK** also have products which comply with the Norwegian Technical Specification NORSOK

**Nora® flooring** is made from high-quality industrial and natural rubber. This flooring meets the requirements of NORSOK Standards for use in the Norwegian sector of the North Sea



**Weber** manufactures a number of Offshore/Marine floor screed systems to meet different needs. They have a varying range from leveling, to noise absorbent, to A60 fire rated deck screeds.



**Bergvik** has developed a new smarter floor system using its own project management team together with their partners, which has given their global customers market advantage and the position of first choice by end users.



**Brintons** carpets are truly international, designed and woven to the most demanding specifications and installed in some of the most prestigious hotels, casinos, airports and marine vessels around the world.



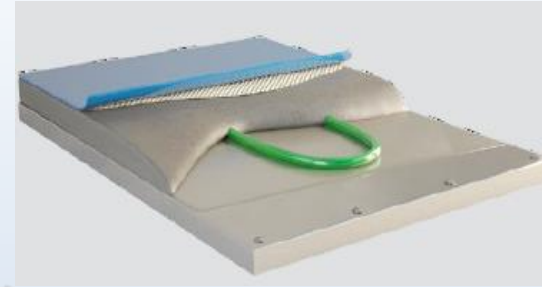
## Underfloor Heating



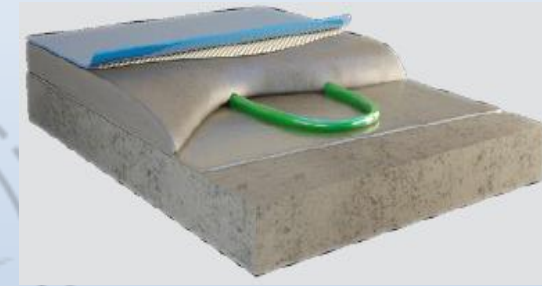
**Weber Marine Thermofloor** is designed for improved comfort in living quarters. Weber has long and proven experience in supply of low profile heating floor. The floor is easy installed on all types of marine accommodations as well as for refurbishments. The range of heating products are designed to solve problems with snow and ice, humidity, condensation and freezing. The products satisfy the Regulations for Electrical Installations in UK & Scandinavia, which are among the world's strictest.

The floor heating system is certified for use in accommodation areas onboard ships and offshore installations. The screed can be used to subfloors for the most floor covers in layers up to 30 mm and is recommended to plane corrosion protected steel floors.

- Heating cables normally last the life-time of the installation
- Free of electromagnetic radiation
- Zero maintenance costs
- «Invisible» heat source
- Automatic temperature regulation,
- No dust burning



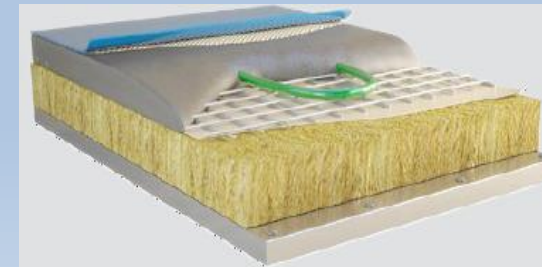
Under vinyl strip floor, directly on steel plate.



Under vinyl strip floor.



Under ceramic tile floor.



Floating on mineral wool insulated steel plate



## Accessories

### Metal Skirtings

Anodised aluminum skirtings provide a modern, streamlined finish for a variety of commercial environments

### PVC Skirtings

Durable, low maintenance solutions.

### Stratum Skirtings

PVC alternative to timber.

### P Range Skirtings

Black, functional PVC skirting range



**GRADUS**

## Wall Cladding

Gradus offers a selection of high-performance wall cladding systems, offering excellent surface protection, suitable for a wide range of applications



## Protect your Walls, Corners and Doors

Wall protection profiles have been designed to protect surfaces such as walls, corners and doors and provide an essential barrier against damage caused by the general flow of wheeled and pedestrian traffic.

## Compliments – Curtains & Blinds

Modern ships and large cruise ships have been adapting to the fire safety requirements that are present in the 1974 SOLAS Convention and which was developed by IMO. MED 96/98/EC Certification, highlighting for their excellent fireproof qualities in their textile fibers and the variety of their attractive colors.



**ROLASOLV®** Fabric Blackout Roller Blinds are the only Flame-Retardant Blackout Roller Blinds that are Type Approved for use on board Flotel's, Oil Rigs, Platforms, FPSO's, Jack-ups, Offshore Drilling Units and other Offshore Structures. Help crews get valuable rest during daylight hours.

**SOLASOLV®** Transparent Anti-Glare Roller Blinds reduce glare and heat caused by the sun which can be a dangerous distraction on Offshore Structures and Vessels such as Survey Ships, Drill Ships, Dive Support Vessels, Pipe Laying Vessels, Cable Ships, and OSV's. Glare and heat protection is also essential for maintaining a safe operational environment in control rooms drilling cabs and other areas.

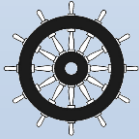




## Compliments – Mattresses

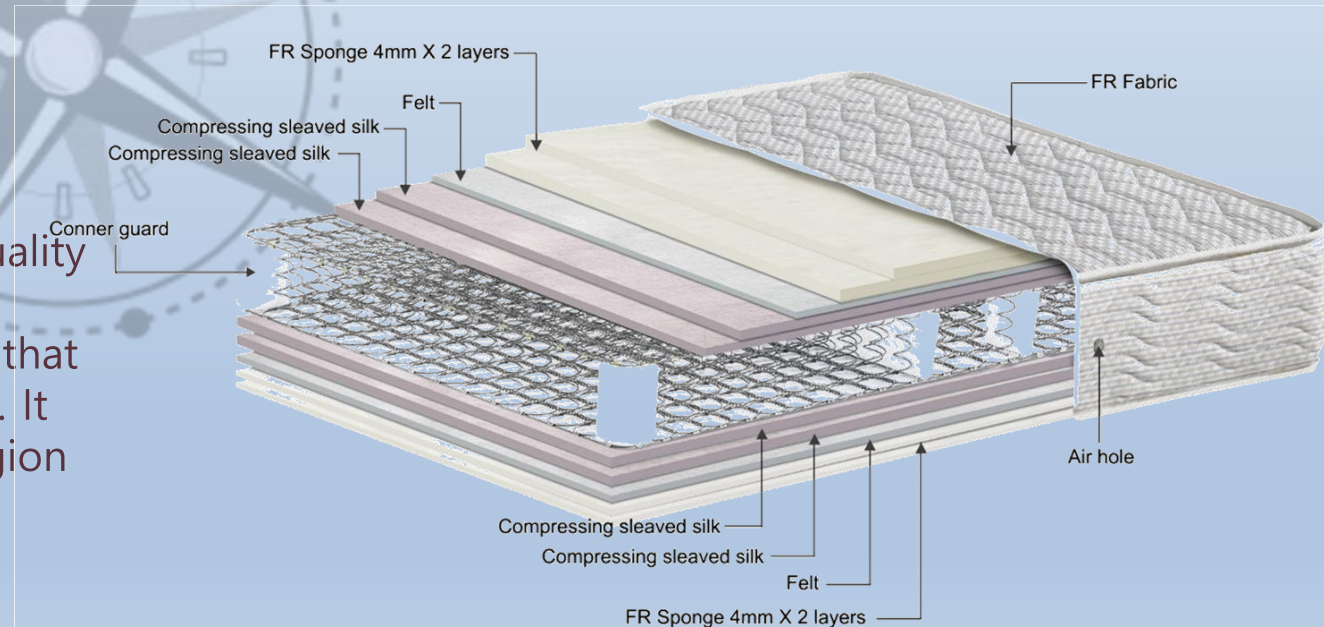
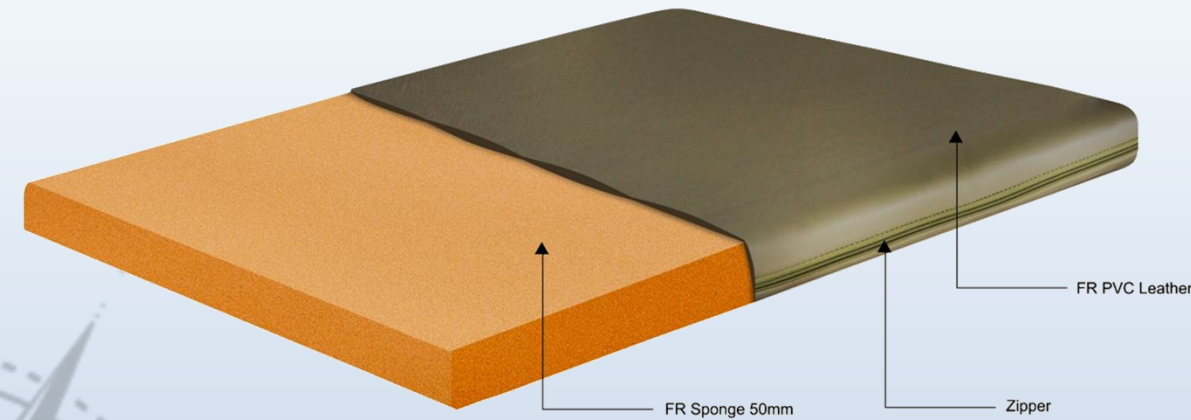
**Foam Mattress** - SONE-MF manufactured to the ISO Quality Management Authority (DNV) and Quality System for products under DNV, GL MED requirements, which asserts that the quality control is maintained, shipped, and supported. It composes of an FR Poly Urethane foam and washable top cover that meets NORSOK standards.

Surface cover comprises of FR Poly Vinyl Chloride leather which helps to avoid bacterial contamination from harmful influence.



**Notified Body No.: 0575**

**Spring Mattress** - SONE-MS manufactured to the ISO Quality Management Authority (DNV) and Quality System for the products under DNV, GL MED requirement, which asserts that the quality control is maintained, shipped, and supported. It composes of a 5 rotate spring that supports the body region and meets NORSOK standards.



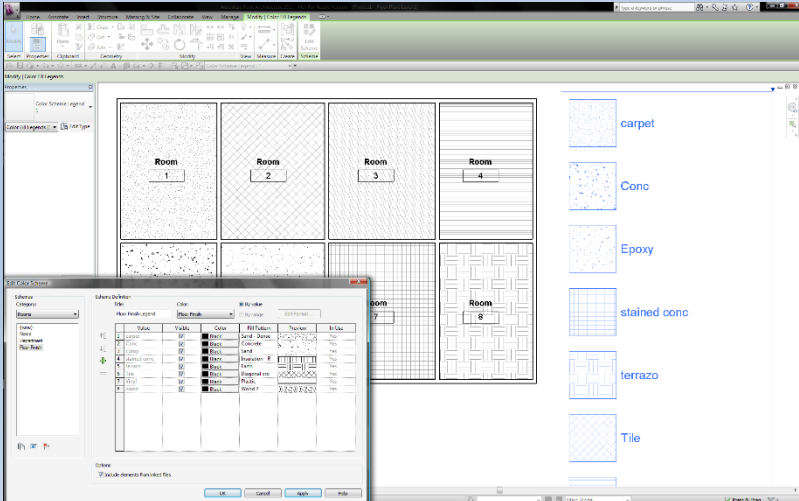
**Compliance with international navigation regulations  
SOLAS – IMO Resolutions – IMO Certificate**

## Services & Technical Support



**IMO Marine Flooring** provide a total range of flooring services for the Marine and Offshore Industries, utilising the highest quality products for long lasting performance. Our extensive experience and knowledge base means we can make informed suggestions and provide custom advise on all aspects of applications, from design, selection, layout through to ongoing maintenance. Our in-house team offer ongoing support to our customers when ever you need. We install 1000's of square metres of flooring every year, so have vast experience gained with every process involved in the specification, purchasing and installation of our range of products sets our level of support above our competition.

- Vessel Surveys
- Suggested Material Specification
- Offshore Platform Surveys
- Drilling Rig & Jack Up surveys
- Assessment of Requirements
- Surveys in Construction Yard / Shipyards
- Free Quotation and Material Samples
- Flooring Schedules & Layouts / Models



**AUTODESK® REVIT® 2020** **Mass Floor Schedule**

**<Mass Floor Schedule**

Mark	Floor Perimeter	Floor Area
00-Ground Floor		
00G	36000	81 m²
01-First Floor		
01F	36000	81 m²
02-Second Floor		
02S	36000	81 m²
Grand total: 3		243 m²

cadline



**We have experienced personnel with full offshore certification available to assist with your Marine/Offshore requirements worldwide**



## Contact Details

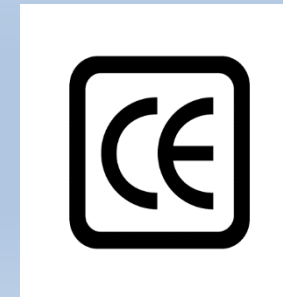
**Contact Us** Please do not hesitate to contact with your enquiry - we are here to assist in any way we can and to provide you with expertise and knowledge to select and provide you with the most effective solution to suit your budget & schedule.

**Phone Us Now : +44 (0) 7935 241881**

or

**Send us your enquiry to [enquiries@marinefloors.com](mailto:enquiries@marinefloors.com)**

**Website : <http://www.marinefloors.com/>**





**IMO MARINE**  
— FLOORING (UK) —



***Your Best Partner for Turn-key Flooring Solutions***